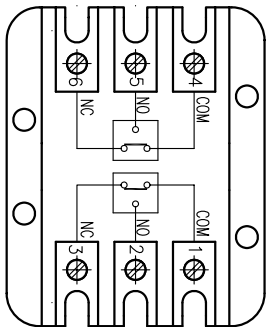
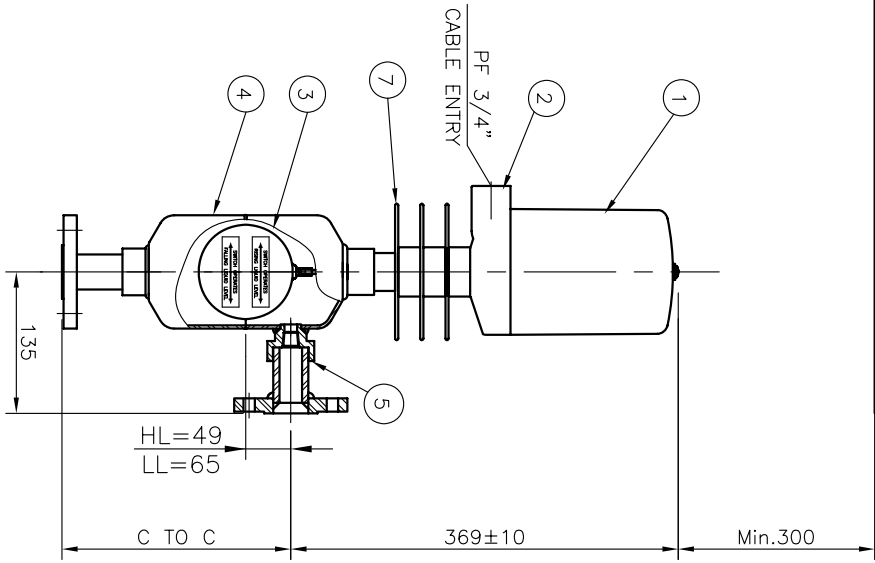


6 SNAP SWITCH



WIRING DIAGRAM



NO.	TAG NO.	FLUID(UPPER/LOWER)	OPER. PRESS. MAX.(Bar)	OPER. TEMP. MAX.(°C)	RATING	SET POINT	C TO C (MEASURING RANGE)	CONNECTION ANSI 150# 3/4" RF (SIDE-BOTTOM)	Q'TY - SETS
1	-	-	-	-	150#	-	-	-	- SETS

TOTAL Q'TY : - SETS

OR	OPENS ON RISING LEVEL
CR	CLOSES ON RISING LEVEL
OF	OPENS ON FALLING LEVEL
CF	CLOSES ON FALLING LEVEL
V	SWITCH ACTION

REV.	DESCRIPTION	DATE	DESIGNED	REVIEWED	APPROVED
△					
△					
△					
△					
△					

DESIGN DATA			
CODE	KEPIC MGE & ASME B31.1		
UNIT	mm		
ENCLOSURE		WEATHER PROOF	
ORDERING CODE	PROCESS TEMP.(CONTACT RATING)		SNAP SWITCH MAT'L
F	Max.350°C (5A 250V AC / 0.5A 125V DC)		PC, CERAMIC,304SS
G	Max.450°C (1A 250V AC / 1A 30V DC)		PC, CERAMIC,304SS
H	Max.350°C (15A 250V AC / 1A 125V DC)		PC, CERAMIC,304SS
I	Max.450°C (1A 115V AC / 3A 28V DC)		PC, CERAMIC,304SS
HERMETICAL SEAL TYPE			

NOTES

1. REFER TO INSTALLATION MANUAL
2. WHEN YOU SET IT UP
3. CABLE SIZE : 14 AWG.
4. DEAD BAND IS 15mm FIXEDLY
5. HEAD ROOM OF 300mm MUST BE SECURED ABOVE THE HEAD FOR INSTALLATION / REMOVAL AND MAINTENANCE
6. CABLE CONNECTION IN TERMINAL PART VIA CLAMPED RING TYPE
7. PAINTING SPEC : SEOJIN STD.
7. TEST FOR WELDING : HYDRO TEST

NO	DESCRIPTION	MATERIAL	QTY	SPECIFICATION	REMARK
7	COOLING FIN	AL	3		
6	SNAP SWITCH				
5	PROCESS CONNECTION	A105	2		
4	CHAMBER ASS'Y	AS16-60	1	ø108	
3	FLOAT	316LSS	1	ø90	
2	BASE	AC2B	1		
1	COVER	C.S	1		

BILL OF MATERIAL

CUSTOMER	-
PROJECT	-

TITLE VERTICAL FLOAT TYPE LEVEL SWITCH
SMC-73B-1-A-5-C-1-F-1-A-1-A
ASSEMBLY DRAWING

MANUFACTURER

Seojin Instech Co., Ltd.

SCALE

N/S

DATE

SJ-MO15-DWG-AP901-A

REV

1